

Murray Tregonning & Associates Pty. Ltd.

A.B.N. 96 006 792 025

www.murraytregonning.com.au

Address:	Phone:	Fax:	E-Mail:
Melbourne: 40-42 Lynch Street Hawthorn 3122	03 9819 6455	03 9819 2265	vicbranch@murraytregonning.com.au
Sydney: 112 Abercrombie Chippendale 2008	02 9310 2799	02 9310 2990	nswbranch@murraytregonning.com.au
Brisbane: 1/8 Paxton St, Spingwood 4127	07 3299 2288	07 3299 3990	qldbranch@murraytregonning.com.au

Equipment Hire List:

(Last update: 8th July 2008)



WIRELESS EQUIPMENT:

Radio Microphone systems by Lectrosonics, Sennheiser and Shure for every application.
MT&A – Innovative leaders in radio microphone technology.

Lectrosonics:

Diversity Portable Receivers:

- **UCR211 synthesised UHF diversity receiver** - Small, lightweight design. 256 selectable channels. Smart Squelch™. LCD display. Internal battery - 9 volt. External power input (7V to 16.5V DC). Output on three-pin balanced XLR.
- **UCR411A digital hybrid wireless compact receiver** - IF Frequencies: 244MHz, 10.7 MHz and 300 kHz / Frequency Adjustment Range: 25.5 MHz in 100 kHz steps / Frequency Response: 32Hz to 20 kHz (+/-1dB) / Battery: 2 x 9V alkaline = 6 to 8 hours continuous / 2 x 9V lithium = up to 20 hours continuous.

Transmitters:

- **UM250C synthesised UHF diversity pocket transmitter** - The UM250C transmitter is housed in an aluminium extrusion and boasts 256 frequencies in 100KHz steps over a 25.5MHz range.
- **UT200 digital hybrid hand-held transmitter** - The UT200 hand-held transmitter is designed for high-end stage and studio use. Dual rotary switches provide 256 frequencies in 100KHz steps over a 25.5MHz range. It has an exclusive VariMic™ Crown CM311 electret microphone capsule, which offers a proprietary low-noise preamp circuit and an attenuator control.
- **UM200C digital hybrid pocket transmitter** - Like the rest of the "200 Series", the transmitter's audio processing circuitry is simply the most advanced in the industry and provides an extremely wide, flat frequency response.
- **UT400 digital hybrid frequency-agile, hand-held transmitter** - The UT400 is an integrated microphone/transmitter with an integral antenna and will operate with any 100 Series, 200 Series and 400 Series Lectrosonics receiver in the same frequency group.
- **UT400 digital hybrid sm87 capsule** - Same as standard UT400 hand-held transmitter but with the Shure SM87 capsule
- **MM400A digital hybrid wireless miniature transmitter (this transmitter is waterproof!)** - Machined aluminum, watertight housing / 256 synthesised frequencies / 100 mW output power / Wide range input limiting / Dual bicolour LED's indicate four different levels for accurate gain adjustment / DSP based pilot-tone signal.
- **SM mini digital hybrid transmitter** - Lectrosonics sets a new standard for size, power, reliability and functionality with the ultra miniature SM transmitter. Switching power supplies throughout the design allows nearly six hours of operation using a single AA lithium battery.
- **SMD mini digital hybrid dual battery transmitter** - The Lectrosonics dual battery SMD model doubles the battery life of the SM with the same feature set. It still sets a new standard for size, power, reliability and functionality as the ultra miniature SM transmitter.
- **UH400 digital hybrid plug on transmitter** - The UH400A is a digital hybrid synthesized UHF plug-on transmitter compatible with all receivers in the 400, 200 and 100 Series product groups. The transmitter operates in its native Digital Hybrid Wireless™ mode, or in alternate modes compatible with analog receivers.
- **UM400 digital hybrid transmitter** - Digital Hybrid Wireless™ technology in a classic Lectrosonics belt-pack transmitter. A 5-pin input jack provides taps for low impedance dynamic mics, electret lavalier mics with positive or negative bias and line level inputs.

Studio / Multichannel Receivers:

- **UDR700 19" 'half rack' digital receiver** - The UDR700 receiver is a 19" half-rack 1RU design for use with Lectrosonics 700 Series encrypted digital wireless transmitters. The receiver provides a full complement of controls and indicators for quick setup and full information at a glance.
- **UDR200C synthesised UHF diversity receiver** - 256 frequencies in 100kHz steps. Pilot tone controlled squelch. Opti-blend™ Radio Diversity. Dual-band audio compandor. Tri-mode dynamic noise reduction. 10-segment LED indicators for RF and AUDIO levels. -40dBu to +15dBu output levels.
- **VRM 6 'Venue' 6 channel receiver** - Digital Hybrid Wireless™ system. Six-channel modular configuration. OptiBlend™ Ratio Diversity, SmartDiversity™. Antenna Phase Diversity or Frequency Diversity. 256 synthesized UHF frequencies per receiver module.

Antennae And Accessories:

- **ALP600 Passive Log Periodic Dipole Array (LPDA)** - Log Periodic Dipole Array (LPDA) provides a useful directional pattern over a broad frequency bandwidth (500 - 800 MHz). Constructed of 1/8" FR4 fiberglass and is extremely rugged. Ideal for portable applications including temporary setups for field production.
- **ALP650 Active Log Periodic Dipole "Shark Fin" Array (LPDA)** - Log Periodic Dipole Array (LPDA) provides a useful directional pattern over a broad frequency bandwidth (500 - 800 MHz). Onboard amplifier ideal for long cable runs - phantom powered from Venue, UMC16 or Bias T.
- **ALP620 Log Periodic Dipole "Skeletal" Array (LPDA)** - Log Periodic Dipole Array (LPDA) provides a useful directional pattern over a broad frequency bandwidth (500 - 800 MHz). Constructed of 1/8" FR4 fiberglass and is extremely rugged. It is not intended to be left outdoors permanently.
- **SNA600 Collapsible dipole antenna adjustable from 550 MHz to 800 MHz** - Collapsible dipole antenna adjustable from 550 MHz to 800 MHz. SWR is less than 2:1 at +/- 50 MHz from the center frequency. Ideal for situations where a full 360 degree receiving pattern is required (as opposed to a directional pattern).
- **UMC16A UHF multicoupler** - UHF multi-coupler for up to 8 diversity receivers. Ceramic resonators filter the incoming RF signals within a factory tunable passband from 15 to 50 MHz wide.
- **UMC200D UHF multicoupler** - UMC200D Diversity Kit. Dual antenna UHF multi-coupler system with RF/power distribution for up to four compact UHF receivers; two SNA600 antennas, two ARG15 coaxial cables and PS70 power supply.

Sennheiser:

Multi-Channel Microport Receiver Systems

- **"THE EIGHT RACK"** - Up to 8 x EM 1046 RX rack-mounted receiver modules coupled with a combination of SK 50 and/or SK 250 UHF pocket transmitters and/or SKM 5000 UHF hand-held transmitters.
- **"THE THREE RACK"** - Up to 3 x EM 1046 RX rack-mounted receiver modules coupled with a combination of SK 50 and/or SK 250 UHF pocket transmitters and/or SKM 5000 UHF hand-held transmitters.
- **SENNHEISER EM 3032-3 "DUAL RECEIVER"** - The EM 3032 consists of two complete true diversity receivers in a single 19" 1RU rack housing.

Portable Diversity UHF Portable Receivers:

- **EK 3041-U UHF portable diversity receiver** - The EK 3041-U is a miniature "true diversity" camera receiver designed for use with the new digital ENG camcorders. It can be inserted in the slot-in facility of some Sony, Ikegami or Philips camcorders.
- **EK 4015-U UHF portable diversity receiver** - Thirty-two switchable channels within a 24 MHz bandwidth, PLL controlled. Robust all-metal casing. Newly-developed low noise LEMO connector for antenna and microphone inputs.
- **QUADPACK QP 3041** - The QP 3041 is a mini rack for housing up to four EK 3041 receivers. It provides the voltage supply and antenna combiner for all mounted receivers. The received audio signals are available at the AF outputs.

Portable Diversity UHF Transmitters:

- **SK 250 high-power pocket transmitter** - 16 switchable channels within a 24 MHz bandwidth, PLL technique. HiDyn Plus noise reduction system with 110 dB (A) dynamic range. B250 battery pack (three AA batteries - three hours battery life). LED battery pack display (shows battery life). (Complete with Sennheiser MKE-2 microphone)
- **SK 50 UHF medium-power pocket transmitter** - 50 mW RF output. 16 switchable channels within a 24 MHz switching bandwidth, PLL technique. HiDyn Plus noise reduction system with 110 dB (A) dynamic range. B250 battery pack (three AA batteries - 9 hour battery life). LED battery pack display (shows battery life). (Complete with Sennheiser MKE-2 microphone)
- **SKP 30 Plug-on Transmitter** - The SKP 30 Plug-on transmitter permits wireless transmission with studio quality sound. The use of further optimised PLL and microprocessor technology and the 'HiDyn plus' noise reduction system ensure interference-free transmission.
- **SKM 5000 hand-held microphone transmitter** - Available with your choice of the following interchangeable microphone capsules:
 - **ME 5009** wide cardioid condenser microphone head
 - **ME 5005** super-cardioid condenser microphone head
 - **ME 5004** cardioid condenser microphone head
 - **ME 5002** omni-directional condenser microphone head
 - **MD 5005** dynamic super-cardioid microphone head.
- **SKM 5000 N hand-held microphone transmitter KK105S** - This is a SKM5000 transmitter with the additional Neuman KK105s Supercardioid capsule.

- **SKM 5200 hand-held microphone transmitter** - Available with your choice of the following interchangeable microphone capsules:
 - **ME 5009** wide cardioid condenser microphone head
 - **ME 5005** super-cardioid condenser microphone head
 - **ME 5004** cardioid condenser microphone head
 - **ME 5002** omni-directional condenser microphone head
 - **MD 5005** dynamic super-cardioid microphone head.
 - **MD 5005e** dynamic super-cardioid microphone head.
 - **KK105S/B** -Condenser mic head with super-cardioid pick-up pattern.
- **SKM 3072-U hand-held microphone transmitter** - The SKM 3072-U is a hand-held transmitter with super-cardioid condenser microphone head, suitable for both vocal and speech transmission. Up to 32 switchable transmission frequencies in the UHF band.

Antennae And Associated Accessories:

- **Sennheiser A5 remote transmitter antenna** - Previously designed as an attachment to the HD25 Headphones. Suitable for EK 2014 TV and EK4015-UHF receivers. Improved reception can be achieved by attaching the antenna to the highest point on the body.
- **Sennheiser AB 1036 active antenna booster** - 24MHZ Antenna booster for compensating for cable/splitter losses. N-type connectors. Attachment via 3/8" thread. Power supply via antenna cable.
- **Sennheiser EM 1046 ASP 212 antenna splitter** - The three EM 1046 ASP antenna splitter modules serve to supply several mainframes with the signals of only two antenna.
- **Sennheiser A12 AD UHF directional active antenna** - Active directional antenna / Frequency range: 450-960 MHz / Bandwidth: 36 MHz / Apex angle: approx. 100° / Front-to-back ratio: = 14 dB / Gain: typ. 10 dB
- **Sennheiser ASA 3000 active antenna splitter** - The ASA 3000 is an active antenna splitter for multi-channel wireless microphone systems with up to 16 channels (8 x EM 3031, 8 x EM 3032 or 8 x EM 3532).
- **Sennheiser ASP 212 active splitter for antenna** - Active antenna splitter 2 x 1 : 2 / DC-coupled for use with antenna boosters / Frequency range 30-950 MHz Max. current 0.3 A DC / Attenuation approx. 4 dB RF connector BNC socket
- **Sennheiser GZA 1036-TV ground plane receiving antenna** - Frequency tuning by adjusting the length of the antenna rods. Design principle: passive ground plain antenna.
- **Sennheiser B 250-1 battery box** - Small Battery Box for three AA size cells for use with the SK 3063 and the SK50 / 2K 250 pocket transmitters.
- **Sennheiser B 50-1 battery box** - Small Battery Box for two AA size cells for use with the SK 3063 and the SK50 / 2K 250 pocket transmitters.
- **Sennheiser DCA 50 Battery Adaptor** - Power Adapter for connecting external 8-30 V AC/DC sources to the SK 50 / SK 250 and SK 3063-U.

Shure Radio Microphones:

Shure Diversity "U Series" UHF Transmitters:

- **Model U1 pocket transmitter with Shure WL183 microphone** - The U1 body-pack is a compact transmitter that offers all the benefits of Shure handheld transmitters. The U1 functions with the full range of Shure lavalier, headworn, and instrument microphones, as well as guitar cables.
- **Model U2/Beta58 hand-held microphone transmitter** - The Shure "U" Series features a wide variety of industry-standard handheld vocal microphones. The transmitter includes timed backlit LCD display, frequency and power lockout, "Mute" functionality and for interchangeable microphone cartridges.
- **Model U2/Beta87 hand-held microphone transmitter** - The Shure "U" Series features a wide variety of industry-standard handheld vocal microphones. The transmitter includes timed backlit LCD display, frequency and power lockout, "Mute" functionality and for interchangeable microphone cartridges.
- **Model U2/SM58 hand-held microphone transmitter** - The Shure "U" Series features a wide variety of industry-standard handheld vocal microphones. The transmitter includes timed backlit LCD display, frequency and power lockout, "Mute" functionality and for interchangeable microphone cartridges.

Shure Diversity "U Series" Receivers:

- **U4D dual channel receiver** - U4D Dual Channel Diversity. Easy-to-read, programmable, multi-function LED to set and view: Actual frequency in megahertz. Squelch setting. UHF TV channel (in U.S. and some international versions). RF, audio and diversity metering.
- **UP4 UHF radio receiver** - The Shure UP Wireless System is a portable, frequency agile, diversity wireless system operating in the UHF band. The UP4 Receiver is easily mounted to a Sony® video camera or any video camera with an Anton-Bauer® battery pack.

Shure Accessories:

- **Antenna UA845-UA Distribution** - This kit can provide RF signals to up to five U4D dual channel diversity receivers (ten radio channels). It also amplifies RF signals to compensate for insertion loss due to splitting signal power to multiple output connectors.
- **One pair UA830A-UHF antenna boosters with low-loss RF cables** - The Shure UA830 is a low-noise, in-line antenna amplifier. It is intended for remote-mounting antennas to a Shure Model UR4 or ULX receiver or Model UA845, or UA844 distribution amplifier in a large installation, effectively shortening the distance from the transmitters.
- **UA-888 Computer Monitoring System** - The UA888 Networking Interface System is a computerised tool that provides Shure UHF radio microphone users with unprecedented control of their system and enhanced feedback of its status.



MICROPHONES:

Studio condensers, lapels, hand helds, lectern, shotguns, head worn, instrument, underwater, stereo, parabolic reflectors and PZM style microphones. Selection advice from industry professionals.

Studio Condenser Microphones:

- **AKG C414 B-ULS the general-purpose microphone.** The C414, in use for years as the general-purpose microphone for vocal and instrument recording, has been further improved again.
- **DPA 4006 omni-directional condenser mic.** The DPA 4006 omni directional (pressure gradient) microphone is a 16mm diameter pre-polarised condenser microphone designed for moderate SPL applications.
- **DPA 4011 cardioid condenser mic.** The DPA 4011 cardioid microphone is a 19mm diameter pre-polarised condenser microphone with a first-order cardioid pick-up pattern.
- **Neumann KMS 150 vocalist microphone.** The KMS 150 is a FET 100 series condenser microphone that has been expressly designed for use by vocalists or for close-microphone positions on instruments. It has a hypercardioid polar pattern.
- **Neumann TLM170 studio condenser microphone.** The TLM 170 studio condenser microphone is provided with transformerless circuitry for high sonic purity.
- **Neumann USM 69i stereo microphone.** The world-standard, stereo condenser microphone with built in directional pattern selectors – choose from omni-directional, wide-angle cardioid, standard cardioid, hypercardioid and figure-eight.
- **RØDE “Classic” tube microphone.** This Australian-made (but world renowned) valve microphone is beautifully-crafted and absolutely stunning. The “Classic” is destined to be the first choice for critical vocal and instrument recording.
- **Schoeps CCM-4 classic compact cardioid mic.** This is the smallest classic (cardioid) condenser microphone (45mm in length). It has a cardioid pattern and comes complete with a sturdy permanently-attached five-metre cable, a swivel mount and a small model TC desk stand.
- **Schoeps CCM-41 classic compact hypercardioid mic.** The Schoeps CCM-41(hypercardioid) is the smallest classic condenser microphone (at just 45mm in length). This mic is strongly directional strongly directional. Sound arriving from off axis is attenuated even more than with a cardioid. The pickup is ‘drier’ and less susceptible to acoustic feedback than any other SCHOEPS microphone type.
- **Schoeps CCM-8 compact figure 8 pattern mic.** This microphone type is a true dipole transducer, operating with a single diaphragm. The main axis of its bidirectional pickup lies at right angles to its cylindrical axis, and is marked at 0° and 180° with a red and a black dot respectively.
- **Sennheiser MKH 40 P48 cardioid microphone.** This is a cardioid studio condenser microphone and has a wide range of applications. It is especially good in less-than-ideal acoustic environments because of its accurate cardioid pattern, which is remarkably consistent down to the very lowest frequencies.
- **Shure KSM 32 cardioid condenser studio microphone.** A single-diaphragm, cardioid condenser microphone for highly critical studio recording and live sound productions. It produces an open, natural sounding reproduction of the original sound source.

Clip-On Microphones:

- **DPA 4061 miniature microphone** - Miniature omnidirectional condenser microphone. Available in black or flesh colours.
- **Sanken COS-11 ultra - miniature lapel microphone** - The Sanken COS-11 BK is an ultra - miniature lapel microphone with a unique vertical diaphragm design.
- **Sennheiser MKE 104-P (P48) mini mic with a cardioid capsule** - A robust condenser clip-on module mini-microphone with a cardioid capsule for top sound quality and better rejection of unwanted background noise. Supplied with a 1.5 metre cable. Powered by P48 phantom power.
- **Sennheiser MKE 2-P (P48) omni-directional condenser mic** - A robust condenser clip-on microphone with omni-directional characteristics for top sound quality. Supplied with a 1.5 metre cable. This model MKE 2 can now be powered by P48 phantom power.
- **Sony ECM – 77 ultra miniature, omnidirectional lavalier mic** - The industry standard for clip-on microphones. Ultra Miniature, Omnidirectional Lavalier - Inconspicuous Design For Film And TV Production - Extended 40-20000 Hz Frequency Response
- **The TRAM® TR50 miniature lavalier microphone** - The TRAM® TR50 miniature professional lavalier microphone answers the needs of even the most demanding sound recording engineer. It has been designed with the latest electret development and electronics technology, to provide high sound quality with little or no visibility.

Lectern Microphones:

- **Clock Audio C800E mini shotgun condenser mic** - A 12" (300mm) flexible extension (miniature gooseneck) condenser microphone designed primarily for mounting on lecterns, pulpits, or conference tables. It has a wide frequency response (50Hz to 18kHz), hypercardioid pickup pattern and is phantom powered.
- **Countryman Isomax IV podium microphone** - Compatibility with any wireless transmitter - Omnidirectional Pattern - 20 - 20kHz (flat cap) frequency response - balanced, maximum SPL 145dB - 9V to 48V Phantom Power

- **Shure MX412C "Microflex" gooseneck microphone** - Available only in a 300mm (12") flexible extension. The MX412C comes complete with the R185B cardioid pattern condenser capsule. Although all our rental microphones are cardioid, you can supply your own interchangeable capsules.
- **Shure SM-99 gooseneck microphone** - A choice of a 450mm (18") OR a 300mm (12") flexible extension (miniature gooseneck) condenser microphone designed primarily for mounting on lecterns, pulpits, or conference tables.

Cabled Hand Microphones:

- **Electro-Voice® RE50/B handheld interview microphone**. The Electro-Voice® RE50/B is specially shock-isolated, omnidirectional, dynamic microphone created for the most exacting professional applications. It was designed particularly for handheld broadcast and soundreinforcement use.
- **Neumann KMS 150 hypercardioid condenser vocalist hand mic**. The KMS 150 is a condenser vocalist hand mic in the "FET 100" series with a hypercardioid polar pattern. The microphone has been developed for use with instruments and vocals at very short ranges.
- **Sennheiser E835 cardioid lead vocal stage microphone**. Especially designed to perform under pressure. Sound inlet basket: refined steel. High sound pressure handling capability. Excellent feedback rejection. Silent ON/OFF switch.
- **Sennheiser MD416-U cardioid dynamic microphone**. Dynamic cardioid hand-held microphone. Can handle high sound pressure levels such as those encountered in car races.
- **Shure 55SH SERIES "2"**. Classic 1950's design "Buddy Holly" style microphone with SM58 dynamic cardioid capsule.
- **Shure Beta 57/57a dynamic super-cardioid mic**. Designed for use with acoustic and electric musical instruments, both live and in the studio, especially drums, percussion instruments, horns, and instrument amplifiers. It has extended low-bass and high frequency response.
- **Shure Beta 58 dynamic super-cardioid hand-held vocal microphone**. Inspired in design by the legendary SM58 and quickly becoming the new world standard, the premium quality Beta 58 is unequivocally the best dynamic microphone for demanding live vocal applications.
- **Shure Beta 87 super-cardioid hand-held condenser vocal microphone**. The Beta 87 is the first electret condenser microphone to join the Beta line. Features include high sound pressure level capability and full electromagnetic shielding. A three-stage pop filter minimises breath noise.
- **Shure SM 63 omni-directional dynamic hand held mic of normal length**. It has an effective wind and pop filter, and the durable VERA-FLEX grille won't dent and look unsightly on camera.

Shotgun Microphones:

- **Sennheiser MKH 416P48 or 416T (12 volt AB)** - P48 phantom power or 12V AB (416T) shotgun microphone with Rycote windshield, handgrip, and power supply (mains or battery) unit if required.
- **Sennheiser MKH 60 P48** - Interference tube semi-shotgun microphone with super-cardioid lobar pick-up pattern. Very lightweight (160g). High directivity for whole freq range (60Hz to 20kHz).
- **Sennheiser MKH 70 P48 Shotgun Microphone** - Interference tube shotgun microphone with lobar pick-up pattern. Very lightweight (190g). High directivity for whole freq range (60Hz to 20kHz). High sensitivity.
- **Sennheiser MKH 816P48 or 816T** - P48 phantom power or 12V AB (816T) shotgun microphone with Rycote windshield, handgrip, and power supply (mains or battery) unit if required.
- **Shure SM89 condenser shotgun microphone** - This is a highly-directional condenser shotgun microphone (with a tighter pattern than a Sennheiser 816). Its characteristics are especially suitable for the distant pick-up required in location film and TV.

Microphone Windshields:

- **Rycote "Windjammers"** - We have a range of 'Windjammers' fluffy covers to fit the following 'Blimps': Sennheiser 416, 816, MKH 60, MKH 70 and the Shure VP88.
- **Rycote "Zeppelin" / "Blimp" Modular Windshield Range** - We have a range of 'Zeppelin' hard covers to fit the following microphones: Sennheiser 416, 816, MKH 60, MKH 70 and the Shure VP88.

Stereo Microphones:

- **Neumann RSM 191 stereo microphone** - The RSM191 is a high-quality stereo shotgun microphone that can be operated either in MS or XY configuration.
- **Neumann USM 69i stereo microphone** - Stereo condenser microphone with built in directional pattern selectors. Omni-directional wide-angle cardioid, standard cardioid, hypercardioid and figure-eight. Complete with Rycote windshield, handgrip OR studio windshield and microphone support mount.
- **AKG C-522 MS stereo microphone** - An optimum-quality stereo microphone for voice, effects and music recording. The C522 MS has three condenser transducer capsules - one front facing cardioid capsule and two capsules angled at plus or minus ninety degrees to the sides.
- **Shure VP88 MS stereo condenser microphone** - The single-point MS stereo condenser VP88 incorporates a forward-facing cardioid "Mid" capsule, a perpendicular bi-directional "Side" capsule and a built-in stereo matrix to provide wide stereo "spread".

Head-Worn Microphones:

- **Voice Technologies VT400 Miniature Lavalier Microphone** - The VT400 is a very small Electret Condenser Microphone and extremely lightweight. Fitted with a miniature microphone capsule, it looks attractive, totally unobtrusive and is in most cases almost unnoticeable.
- **Voice Technologies VT401 Lavalier Microphone** - The VT401 is a very small Electret Condenser Microphone and extremely lightweight. Fitted with a miniature microphone capsule, it looks attractive, totally unobtrusive and is in most cases almost unnoticeable.

- **Voice Technologies VT500 Miniature Lavalier Microphone** - The VT500 has extremely smooth omnidirectional pattern control over a wide frequency range. It is designed for performing talent in broadcast, theatre, film, public address and sound reinforcement.
- **Voice Technologies VT700 Super Light Headworn (Indoor)** - Ideal for event production, public speaking, theatre and broadcast studio operations. The VT700 headworn is lightweight, the flexible gooseneck enables the user to position the microphone for optimum sound and gain before feedback and is very comfortable.
- **Voice Technologies VT702 Super Slim Headworn** - The VT702 is a superlight and very thin headworn microphone ideal for event production, public speaking and broadcast studio operations. The sound is clear and natural. The cable is smooth, rugged, sweat proof and has excellent isolation from rubbing noise.
- **Voice Technologies VT710 Rugged Headworn (Aerobic and Outdoor)** - The VT710 is an ideal hands free microphone for use by instructors of sports and aerobics, television field reporters, singers, entertainers e.t.c. (noisy surroundings).
- **AKG C 420 micro cardioid condenser microphone** - The C 420 is a cardioid condenser microphone. - Has a new lightweight "behind the ear" band. - Frequency range – 20 to 20kHz 7mVpa (-43 dBv). - Impedance 200Ω, maximum SPL (1% THD) 126db.
- **Countryman P48 phantom-powered** - The first ever hypercardioid condenser head-worn microphone. The headband fits around back of the head for minimum visibility. P48 phantom-powered or a special version for direct powering from Sennheiser or Shure pocket radio microphone transmitters.
- **Countryman E6 ear set microphone** - Perfect on stage, the E6 clips around the ear and comes with either 1mm or 2mm cable. A wide variety of connectors can be attached for compatibility with any wireless microphone transmitter.
- **Crown CM-311** - The CM 311 is designed for touring sound and is a rugged head-worn microphone for musicians or sports-casters.
- **Crown CM-312** - The Crown CM-312 is a rugged, lightweight head-worn hypercardioid microphone designed for aerobics, live entertainment, and sports broadcasting.
- **DPA Model DPA 4065** - The 4065 is a miniature headset that comes in beige or black and depending on the model, bends to fit for microphone placement on the left or the right side of the head. It uses a pre-polarised omnidirectional cartridge element with a 5.4mm vertical diaphragm.
- **DPA Model DPA 4066** - The DPA 4066 has all of the features of the DPA 4065 with the added benefit of additional flexibility in mode of use. The headband construction is unique in that it allows the microphone to be worn on either the right or left side of the head.
- **Shure WH10 head-worn microphone** - The WH10 dynamic head-worn microphone provides reliable performance in active applications such as stage vocals, aerobic instruction and DJ work. For use with Sennheiser or Shure pocket radio microphone transmitters or as a hard-wired microphone.

Miniature Instrument Microphones:

- **Shure SM98A** - Unidirectional surface-mount microphone with a high-quality electret condenser element and preamplifier. Extremely versatile, ideal for television, news conferences, stage productions; anywhere inconspicuous placement on a surface is required. Also excellent for kick drums or acoustic pianos. Battery or phantom powered, this microphone can also be used with a Shure radio transmitter.

Low Profile Desk Microphones:

- **Shure SM91 / Shure 819 (PZM-style mic)** - Unidirectional surface-mount microphone with a high-quality electret condenser element and preamplifier. Extremely versatile, ideal for television, news conferences, stage productions; anywhere inconspicuous placement on a surface is required. Also excellent for kick drums or acoustic pianos. Battery or phantom powered, this microphone can also be used with a Shure radio transmitter.

Lip Ribbon Microphones:

- **Coles 4104 Commentator's Lip Ribbon** - The 4104 commentators' noise-cancelling ribbon microphone is a BBC design, and is widely used for reproducing high quality commentary and other speech in noisy surroundings by cancelling out a considerable degree of background noise.

Commentator's Microphones & Headsets:

- **Sennheiser HMD 25-1 commentator's headset** – This headset features an MD 414 super-cardioid close-contact dynamic microphone with closed-cup headphones, resulting in excellent attenuation of background noise. It has been designed specifically for use in noisy environments
- **Sennheiser HD25s headphones** - These are purpose-designed professional monitoring headphones offering high attenuation of background noise. Capable of handling very high sound pressure levels. 3.5mm TRS connector
- **Beyer Dynamic Model DT 109 commentator's headset** - The industry standard, Beyer Dynamic model DT 109 headset with five or six-pin XL connector to suit Mooretronics Sports Commentator units
- **Coles 4104 commentator's lip ribbon microphone** - The 4104 commentator's noise-cancelling ribbon microphone is a BBC design, and is widely used for reproducing high quality commentary and other speech in noisy surroundings by cancelling out a considerable degree of background noise.
- **MB Quart Model K 900 commentator's headset** - with five or six pin XL connector to suit Mooretronics Sports Commentator units

Underwater Microphones:

- **DPA 8010 Hydrophone** - The DPA 8010 is a 4Vv phantom-powered, waterproof microphone designed to handle high sound pressure levels and the high static ambient pressure in water. The 8010 uses a piezoelectric sensing element, which is frequency compensated to match under water acoustics. It comes with a 10m waterproof audio cable that is vulcanised onto the body of the microphone. The output is balanced and is fitted with a standard three-pin XL connector

Parabolic Reflectors:

- **BIG EARS Parabolic Reflector (without microphone)** - The BIG EARS parabolic reflector facilitates “sound gathering” in situations that were hitherto considered impossible, leading to results previously “unheard of” in terms of clarity and quality.

Accessories:

- **AKG P48 Phantom Powering Unit** - This is a mains powered P48 phantom power supply. It will supply six individual inputs on standard three-pin XL connectors
- **LA Audio D12 Active Direct Injection Box** - This features automatic power switching from dual 9-Volt batteries to phantom power when available. A four-position dual switch provides up to 40dB of attenuation. Other features include a ground lift switch, balanced and unbalanced output and a link facility
- **Sennheiser P48 battery phantom power supply**

Microphone Isolation Transformers:

- **Proco MS-43A microphone isolation transformers** - The system is built around a four-channel module 1RU high. Each channel has an XL input and an XL direct output. The isolated output appears on XLs both on the front panel and in parallel on the rear of the unit. Each isolated output has individual ground lift. MT&A can supply up to thirty-six channels, allowing you to tailor a cost-effective system to your exact requirement. The system is ideal for use with multi-track recorders and for splitting microphones between PA systems and outside broadcast vans.



AUDIO MIXERS:

Location mixers, ENG mixers, PA mixers, Automatic mixers, rack mount mixers from Lectosonic, Shure, Mackie, Allen & Heath, SQN, Audio Developments, Whirlwind and Rane.

Audio Mixing Consoles:

- **Allen & Heath GL 2000-24** - The GL 2000-24 is a 24 channel compact stereo mixer. 16 mono / 2 stereo Mic/Line // 4 Stereo Line Inputs // 4 Aux // 4 Sub // Stereo Output.
- **Allen & Heath GL 2200-32 - A 32 channel compact stereo audio mixer** - The GL 2200-32 is a 32 channel compact stereo audio mixer. See GL 2000-24 above for details.
- **Allen & Heath Mixwizard Series WZ14:4:2** – MixWizard WZ14:4:2 brings to the serious sound engineer an amazingly versatile four-group live mixer packed with features and built to Allen & Heath’s demanding sound standards.
- **Allen & Heath Mixwizard Series WZ20S** - The Series WZ20S has 4 Mono Channels/ 8 Stereo / 2 Stereo outputs. The WZ20S has 12 input channel strips. Four mono channels accept any signal, mic or line, on either jack or XLR. Eight stereo strips feature dual A and B inputs so that one of two stereo sources can be selected.
- **Mackie Model CR-1604** - The Mackie CR-1604 is a portable sixteen-channel compact stereo audio mixer complete with Mackie model XL-10 microphone preamp expander – the industry standard for low noise, high headroom and sonic quality.
- **Mackie Model CR-1604-VLZ** - The updated version of Mackie’s industry-standard CR-1604 mixer – a portable sixteen channel compact stereo audio mixer. Also the industry standard for low noise, high headroom, and sonic quality, with multi-mode physical configuration.
- **Mackie Model SR-24-S 24/4/2** - The Mackie Model SR-24-S 24/4/2 has 24 channels / 4 groups / Stereo output.

ENG/EFP (Over-Shoulder) Audio Mixers:

- **Wendt X4 four-channel location mixer** - The Wendt X4 is a four-channel EFP/location audio mixer packed with features that make life easy for location sound gathering and recording.
- **Audio Developments AD146** - The world’s first four-output battery powered mixer. Foremost in the application of MS technology, the AD146 was created to provide a new standard of excellence for the serious sound recordist.
- **Shure FP-32 Compact ENG/EFP Stereo Mixer** - A three-channel stereo audio mixer with three balanced mic/line inputs with a centre-detented stereo pan pot for each input channel and switchable P48 / T12(AB) microphone powering.
- **Shure FP-32a Compact ENG/EFP Stereo Mixer** - A three-channel stereo audio mixer with three balanced mic/line inputs with a centre-detented pop-up stereo pan pot for each input channel and switchable P48 / T12(AB) microphone powering.
- **Shure FP-33 Compact ENG/EFP Stereo Mixer** - The new FP-33 gives you all the standard features of the FP-32A +B507 plus many more. Main Features: Three balanced mic/line inputs / Two main outputs (stereo) / Weighs 1.6kg./Up to eight hours operation from two 9V alkaline batteries.
- **Shure Mixer Loom** - A Shure mixer to Betacam SP audio loom. For FP32, FP32A, and FP33. Length 2.4m, three pairs. (Two audio XL to XL and one headphone return Betacam to FP-32 stereo mixer) allows the sound operator to listen off tape for confidence monitoring.

1 Rack Unit Mixers:

- **Rane MLM 82 Mic/Line Mixer** – The Rane MLM 82 has a total of eight inputs and two main outputs - four balanced XL mic/line inputs and four balanced/unbalanced 6.5mm TRS stereo or mono line inputs. The mic inputs are of fixed attenuation but carry switchable 48V phantom power.
- **U.S. Audio Whirlwind MIX "6" Stereo Mixer** - The Mix "6" delivers the ultimate in sonic performance for the most demanding professional microphone and line mixing applications. It has excellent signal to noise ratio and headroom making it ideally suited to both analogue and digital production.

Automatic Audio Mixers:

- **Lectrosnics AM8TC Automatic Microphone Mixer** - The AM8TC automatic mixer is the same as the AM8 but, in addition, features recessed high and low frequency-shelving controls on each channel. The AM8TC provides microprocessor-controlled adaptive gain-proportional algorithms to minimise feedback.
- **Shure Model FP-410 Intellimix** - The world's first portable automatic mixer - the FP410, featuring Shure IntelliMix. Shure's IntelliMix is the patented operational concept behind the revolutionary FP410. It thoroughly shatters all existing standards for portable mixer performance and ease of operation.
- **Shure Model FP-810 Intellimix** - The FP810 also features Shure IntelliMix and is the big brother to the FP410. Just set your levels and flip the switch to automatic. Shure IntelliMix does the rest.



LOUDSPEAKERS:

KRK, JBL, Auratone, Fostex and dB Loudspeaker systems.

- **JBL Control One Loudspeakers** - Smooth, Powerful, Wide Range Response in compact Enclosures. The Control Series is pure JBL, combining high performance, and rugged construction into a line of loudspeaker systems with unprecedented versatility.
- **KRK Model 6000 Control Loudspeakers** - Featuring cutting-edge design, an all-new aluminum woofer and 1" silk tweeter, the ST series monitors offer exceptionally accurate, smooth response and high power handling, without producing ear fatigue.
- **Auratone Control Room Loudspeakers** - Auratones are and were one of the best kept secrets among the recording and broadcast professionals around the globe.
- **Fostex 6301B Powered Loudspeakers** - The Fostex 6301B Compact Powered Monitor - single. Rugged & road worthy with a 10cm full range driver that delivers a big sound, full of clarity from this small, versatile monitor.
- **dB Audio M80 Self-powered Loudspeakers** - An Italian range of advanced active loudspeakers combining new technologies with advanced materials. The characteristics of the sound have been used to model the unique shape of the waveguides moulded into the enclosure.
- **dB Audio M160 Self-powered Loudspeakers** - The system can be used directly with a microphone or from a mixer. It is versatile and accepts balanced or unbalanced input signals with XLR or standard jack connectors for use as a stage monitor or for a main PA.



RECORDING EQUIPMENT:

Specialist quality digital and analogue record and replay units in a variety of industry formats. DAT, CD, Mini-disk, Cassette, Hi-8 (DA-98), 360 Systems DigiCarts and Instant Replay Hard Disk record/play units.

Digital Cartridge Machines:

- **360 Systems Short Cut Digital Hard Disk Editor** - The 360 Systems' Shortcut digital editor delivers all the features you'll need to capture and edit audio for talk radio, call-in clips, news reports, promos and commercial spots. Most importantly, you'll get results in record time.
- **360 Systems "Instant Replay"** - A fully professional quality audio sampler. It maps individual recordings to ten banks of fifty "hot key" buttons, providing instant access to a very large library of recordings.
- **Digicart II 360 Systems** - DigiCart II has been developed to work as a broadcast hard disk system to replace cartridge machines. It delivers multiple improvements over NAB cart machines by using proven digital sound technology and hardware, augmented by flexible control features.
- **Digicart II 360 Systems - IOMEGA Zip and Jazz External Drives** - DigiCart II Plus machines are only available from the factory with internal Zip drives instead of the more expensive original Bernoulli drives. Due to many requests from our clients, we now cater for both types of drive.
- **Digicart II Keyboard (RC-220 Remote)** - This full-featured remote control duplicates DigiCart/II's front panel in a low profile, small footprint package. It is designed primarily for production work, but doubles for playback operations as well.

Digital Multi-Track Recorders:

- **Tascam DA 98 "HI-8" Eight-Track Recorder** - Confidence head recording: Now there is no need to worry if you are in-fact recording onto tape. Just the press of one button and you are monitoring off tape while in record mode.
- **Tascam DA-88 "HI-8" Eight-Track Recorder** - The Tascam DA-88 eight-track digital audio recorder offers more than 100 minutes of recording time on world-standard 8mm "Hi-8" video cassettes.

Minidisc Recorders:

- **Marantz PMD650 Mini Disk Recorder** - The Marantz PMD650 has been designed from the ground up as a fully professional portable MiniDisc recorder. It has unparalleled recording and editing facilities, including a twenty-second recording buffer.
- **Portadisk MDP500 Mini Disk Recorder** - The HHB PortaDisk MDP500 caters for professional microphones and is equipped with a back-up internal mono microphone.

Portable / Location Digital (R-Dat) Dat Machines:

- **Fostex PD2** - The first portable four-head timecode DAT recorder designed for film and stereo television field production.
- **Fostex PD4** - The Fostex PD-4 is a four-head portable timecode DAT recorder that includes a quality three-channel mixer. It features full-function capability and the highest quality sound - the two main requirements for professional location work.
- **HHB PDR 100TC Portadat** - The model PDR 100TC is a portable DAT machine with timecode. The machine is fully featured with a four-head, four-motor transport, balanced XL mic/line inputs, built in speaker and P48 phantom powering.
- **Sony Model TCD-D100 DAT-"Walkman" (without timecode)** - The TCD - D100 supercedes the D-7 (see Below), but retains the same features. It is the smallest portable DAT (Digital Audio Tape) recorder available. Dimensions 132.6 x 36.7 x 88.2 mm.
- **Sony Model TCD-D7 DAT-"Walkman" (without timecode)** - The smallest portable DAT (digital audio tape) recorder available. Dimensions 132.6mm x 36.7mm x 88.2 mm. Weighs 500 grams including batteries. Microphone and line inputs via a 3.5mm stereo mini-jack.

Professional Cd Recorders / Players:

- **HHB Model CDR-800 professional CD recorder** - The latest in CD technology is the CD recorder from HHB. This CD burner is easy to use, and provides high sound quality and excellent durability as a recording medium.
- **Marantz CDR300 portable professional CD recorder** - The Marantz Professional CDR300 is ideal for direct to CD-R/RW live recording applications. Stereo XLR or 1/4" mic/line inputs with 48V phantom power. Also has an Internal microphone and speaker for playback is built-in.
- **Marantz PMD330 CD player and remote** - The Marantz PMD330 CD player is a 19" rack mount machine designed to play normal audio CD's, CD "Text" disks and CD-RW disks. The unit features $\pm 8\%$ pitch control, instant start, fader-start connection, and has both balanced and unbalanced analogue outputs.
- **Tascam Model CD-601 Pro CD Player and RC-601 Remote** - In addition to outstanding overall reproduction performance, the Tascam CD-601 professional CD player integrates all the basic functions required for stand-alone "on-air" and production applications.
- **Yamaha CDC-645 Multi Stack CD Player and Remote** - This CD player holds five CDs for continuous playback.

R-Dat Digital Studio Machines:

- **Fostex PRO DAT D10** - The D10 digital audio tape recorder is the smallest of the Fostex studio (timecode) DAT recorders.
- **Fostex PRO DAT D15** - This digital audio tape recorder is an up-grade of the D10. It will chase timecode and synchronisation with all popular video-editing systems except Avid.
- **Fostex PRO DAT D25** - The D25 digital audio tape recorder ideally suited for people working in audio post-production. Expressly designed for use as a controller via Sony 9-pin Protocol
- **Fostex PRO DAT D30** - The D30 digital audio tape recorder (timecode) combines functionality, ease of use and a display that tells you exactly what's what at a glance. In fact, it's the display that sets the D30 apart from its competitors
- **Fostex PRO DAT D5** - Features include: High-speed A1 search: Sub code information recorded on the tape is read to learn the music number and starting point of the tune and, using this data, an A1 search up to 300 times normal speed is attained.

Audio Cassette Machines:

- **Denon DN 720R** - This professional single stereo cassette tape deck features Dolby B and Dolby C noise reduction, MPX filter, bias adjustment, and variable tape speed control.
- **Denon DN-770R** - The DN-770R was designed with flexibility in mind. Relay replay will output the audio signal from the deck playing to both outputs simultaneously in BGM applications, automatically changing to the other deck for continuous audio.
- **Tascam 112R** - A professional stereo cassette tape deck. Features include: Dolby B and C, pitch control $\pm 12\%$ and switchable auto-reverse mode.
- **Marantz PMD510 Dual Cassette Deck** - Fully Independent Decks, Cascade Recording and Playback, Separate Pitch controls ($\pm 15\%$), Separate Digital Linear Time-based Counters, Dual Stereo LED Peak Meters, Normal and High Speed Dubbing.



COMMENTARY GEAR:

Sports commentary control units, lip ribbon microphones, commentary headset/microphone combinations.

- **Coles 4104 Commentator's Lip Ribbon Microphone** - The 4104 commentators' noise-cancelling ribbon microphone is a BBC design, and is widely used for reproducing high quality commentary and other speech in noisy surroundings by cancelling out a considerable degree of background noise.
- **Sennheiser HMD 25-1 Commentator's Headset** - The HMD 25-1 headset features an MD 414 super-cardioid close-contact dynamic microphone with closed-cup headphones and has been designed for use in noisy environments. It has rapidly become the de-facto standard for sports commentators. the other deck for continuous audio.
- **beyerdynamic Model DT109 Commentator's Headset** - The industry standard, Beyer Dynamic model DT 109 headset with five or six-pin XL connector to suit Mooretronics Sports Commentator units.
- **MB Quart Model MBK 900 SC Commentator's Headset** - MB Quart model K 900 headset with five or six pin XL connector to suit Mooretronics Sports Commentator units.



AUDIO DISTRIBUTION & MEDIA SPLITTERS:

Media splitters, headphone splitters, audio distribution units, mic level to line level amplifiers, direct injection boxes, phantom power supplies.

- **SHURE Model FP-16A** - This is the industry-standard audio distribution amplifier and media splitter, with a choice of AC or DC powering. It features XL connectors for the single input and the six outputs. All inputs and outputs are individually switchable between mic and line level. The mic input features P48 phantom and has up to 90db variable gain. The FP-16A also has a "link" feature, so you can "daisy-chain" multiple units together without tying up the outputs
- **"Presspower 2" Media Splitter** - The "PressPower 2" media splitter delivers broadcast-quality audio from sixteen transformer-isolated outputs individually switchable between mic and line level. The unit has two balanced inputs, each switch-selectable for microphone or line-level signals, so it can be used either as a stereo splitter or as two individual mono splitters



IN-EAR MONITORING:

In-Ear Monitoring Systems and Interrupted Foldback Units (IFB) from Lectrosonic, Shure and Sennheiser. Super high quality transducers available.

IFB Units (Interrupted foldback):

- **Lectrosonics IFB T1 Wireless Synthesised UHF IFB Transmitter** - The T1 transmitter is a compact assembly with a three-pin XL input connector. The DIP switches on the rear panel select the required level and pin configuration of the XL. A front-panel LED display indicates the selected frequency.
- **Lectrosonics T4 Wireless Synthesised UHF IFB Transmitter (Current Model)** - 256 UHF frequencies in 100kHz steps, Microprocessor controlled operation, 100 mW power output for long range use, Built-in microphone preamp, DIP switch programmable intercom input, Tx mute for frequency scrolling, Multi-function LCD display.
- **Lectrosonics R1a Wireless Synthesised UHF IFB Receiver** - The R1a receiver is a compact belt-pack design with enough power to drive any earphone, headset or induction loop. The output is on a 3.5mm mono/stereo plug compatible with an impedance range of 8 to 600 ohms.
- **Lectrosonics LM Digital Hybrid UHF Belt Pack Transmitter** - The LM Transmitter uses the Digital Hybrid Wireless™ system, using 75 kHz wide deviation for an extremely high signal to noise ratio. The input amplifier uses an ultra low noise operational amplifier (op amp) for quiet operation.

Personal Stereo Monitor Systems:

- **Shure P.S.M.600 In-Ear Monitors** - The units are available in both wired and wireless versions complete with model E1 universal ear-pieces or we can custom model them to suit your ear for a perfect fit
- **Shure P.S.M.700 In-Ear Monitors, 1 x transmitter, 1 x receiver** - Shure's new PSM700 wireless personal monitor is a frequency-agile system with two groups of sixteen selectable UHF frequencies (thirty-two in total). Up to sixteen PSM700 systems, each providing a separate stereo mix, may be operated simultaneously.



COMMUNICATIONS EQUIPMENT:

State of the art Radio Frequency (RF) and Wired Communications gear from Motorola, Clearcom and Telex Radiocom. Party line and Matrix communications systems for all applications. Simple to Complex!

Wireless Radio Talkback Systems:

- **HME DX300 Wireless Intercom Communications System** - The DX300 Wireless Headset System provides clear, secure, two-way sideline and press box communication for up to 20 users. The DX300 takes only minutes to set up. No special start-up procedures or complex antenna set-up is necessary. The DX300 digital technology offers superior sound clarity to ensure that your instructions are clearly heard above loud noise. When used in a sporting setting, the DX300 system enables five coaches to communicate in two-way, hands-free, "two up/three down" configuration - with two users connected to the base station and three on wireless COMMUNICATORS®. **'C' Tick Approved For Australia And New Zealand!!**
- **HME DX200 Wireless Intercom Communications System** - The DX200 Wireless Intercom System from HME provides crystal-clear, secure and interference free communications. You'll never have to worry about unauthorized users hearing your communications. Up to 15 beltacks (BP200) can be used with one DX200 master station. HME BP200 and headsets charged individually. The DX200 is compatible with RTS® and ClearCom® hardwired intercom systems. Rechargeable lithium-ion batteries provide 20 hours of beltack operation with each charge, extending the life of your batteries and keeping the cost of operation low. **'C' Tick Approved For Australia And New Zealand!!**
- **HME DX100 Portable Wireless Intercom Communications System** - Secure and Seamless for any application, the HME DX100 allows up to 15 people to speak to each other via headsets without any interconnecting cables. Much better than walkie-talkies – you can seamlessly communicate in hands-free mode or have a private conversation on a secured channel. You can even use AA/rechargeable batteries or 12VDC/automotive power. Simple and expandable, the DX100/100C comes complete with everything you need for reliable, cost-effective operation for any application. **'C' Tick Approved For Australia And New Zealand!!**
- **BP200 Beltack for DX100, DX200 and DX300 Base Stations** - The BP200 is for use with the DX100, DX200 and DX300 systems and the BP300 is for use with the new DX300 Wireless Headset System.
- **HME - WH200 ComLink All-in-One Digital Headset** - ComLink is compatible with HME's portable DX100, rack-mounted DX200 or DX300 base stations. You can easily add a ComLink headset to your current system for more mobile communications.
- **HME HS12 Headset** - For use with only the HME Comms range of equipment, this super lightweight, single-muff headset with omnidirectional electret microphone can be worn on the left or right ear.
- **HME HS14 Headset** - For use with only the HME Comms range of equipment and with a noise-cancelling electret microphone, this "overhear" single-muff headset blocks out background noise and keeps conversations clear and audible.
- **HME HS14D Headset** - For use with only the HME Comms range of equipment, your conversations will be loud and clear even in noisy environments with this "over-the-ear" dualmuff headset with noise-cancelling electret microphone.
- **HME HS15 Headset** - For use only with the HME Comms range of equipment, this headset has been developed for use with the HME BP200 Belt Pack.
- **Telex® RadioCom™ BTR-800 UHF-Synthesized Wireless Intercom System** - The BTR-800 system includes the BTR-800 frequency-agile base station, working with up to four TR-800 or TR-825 frequency-agile beltacks. The BTR-800 base station provides full-duplex communications with the beltacks.
- **Clear-Com PL Pro MS-440 4 Channel Intercom System** - Compatible with all Clear-Com intercoms, the MS-440 series accepts a wide range of dynamic headsets, with a choice of headset connectors. Optional plug-in noise-cancelling gooseneck microphones are available in 9" and 18" lengths.
- **Clear-Com PL Pro MS-232 2 Channel Main Station** - Rack-Mountable Two-Channel Main Station Compact, feature-laden, single-rack-space intercom main station supports up to 60 headset or 20 speaker stations on two intercom channels.
- **Clear-Com IF4B Modular 4-Wire Interface** - The IF4-B modular 4-wire interface connects camera intercoms, two-way radios, fiber optics, and other 4-wire devices to a standard Clear-Com intercom line. The 1-RU chassis holds up to four individual interface modules.
- **Motorola GM950 5W Portable Duplex Base Station** - The GM950 Plus is most ideally suited for an organization that needs flexibility to manage the task force and ability to cater to future fleet expansion. It provides a higher level of communication by offering several enhanced signaling features such as MDC1200 signaling and Select V signaling and a range of accessories such as Hand Held Control Microphone and Remote Mount Kit is also available for added flexibility to the radio's performance.

- **Motorola GM328 Portable Transceivers** - The practical radio is the simple yet high performing two-way radio solution for professionals who need to stay in contact. Its streamlined features include the essentials to keep users communicating steadily and efficiently – including limited signaling capabilities and two customisable function buttons. Motorola's unique X-Pand™ audio enhancement and a large front-projecting speaker ensure clear, crisp sound, even in noisy environments. The practical GM328 radio gives you virtually everything you need to get the job done.

Covert Communication:

- **AHL COVERT EARPIECE AND LOOP** - Available for hire and sale, this unit is designed to give clear communication with out any visible cabling from receiver to the earpiece. The Series '7' no buzz wired earpiece is designed to operate with the Lectrosonics R1a.

ISDN Telephone Codec:

- **CDQ Prima 120 ISDN Audio Codec** - CDQ Prima 120 has an LED level display, front panel headphone output and RS-232 remote control port. It handles various compression algorithms, including ISO/MPEG Layer II, ISO/MPEG Layer III, CCITT G.722, CCS MUSICAM and more.

Scanners:

- **ICOM Model IC-R1 wideband scanner receiver** - Information overheard through the IC-R1, but not intended for you, cannot be lawfully used in any way. The IC-R1 is a state-of-of-the-art handheld receiver made with Icom's most advanced technology. It features include its incredibly compact size and weight, an internal Nickel-Cadmium re-chargeable battery, and its wide-band frequency coverage of 0.1 to 1300MHz in AM, FM and wide FM modes.

Telephone Hybrids:

- **Gentner Model DH20 Digital Telephone Hybrid** - Interfaces audio mixers and recorders to the telephone system. The DH20 is a single digital hybrid, allowing connection of a single external telephone line. The unit features completely automatic nulling and does not output "bleeps"
- **Mooretronics T.L.I.-795 Telephone Line Interface** - This acts as a simple interface, matching the telephone line impedance and level with an audio line impedance and level. It is not a hybrid, but works as a send or receive unit. It is powered off the telephone line DC power, and inserts between the telephone and the wall socket. It has male and female XLs, bridged across in parallel, therefore usable as either an input or an output device.

Television Presenter I.F.B. (interrupted foldback):

- **Audio Telex IFB Earpiece kit (Sale only, excludes GST)** - Includes a high-powered 60-Ohm voice-frequency receiver, 45cm lead with 3.5mm mono-jack to mini-2-pin polarised connector, curly cord with a receiver adapter, and three ear-tip sizes. Available in either right ear or left ear configuration
- **Audio Telex IFB Earpiece Spares (Sale only):**
 - New 45cm lead with 3.5mm jack to mini-2-pin polarised connector.
 - New high-powered 60-Ohm voice-frequency receiver.
 - New curly cord with a receiver adapter.
 - New set of three ear-tip sizes (small/medium/large).
- **Mooretronics IFB (Interrupted foldback) Control Unit** - The IFB (interrupted foldback) units are similar in construction to the Mooretronics Sports Commentator Units Mk1, but packaged in a small lightweight ABS box. It will interrupt six different talkback lines. A common program input is sent to all six outputs, and the director / producer / client can push any or all of the six keys to direct talkback to the individual outputs. In other words, the unit has one program input, and six "IFB" outputs. The unit is supplied with a gooseneck microphone, and the microphone gain for this can be adjusted on the unit. The sixth key on this unit can be switched to a "panic" key and when pressed will key across all six outputs. Also, a switch allows one of the outputs to have the talkback microphone fully on all the time.

Wired Talkback System:

- **Mooretronics Twelve-Line Order-Wire Unit** - The twelve-line order-wire unit is a mains-powered stand-alone twelve-channel, two-wire or four-wire, balanced in/out talkback station with individual send and receive level controls on each channel. The unit is designed for use in studios or on outside broadcasts for directors, producers, audio operators, master control, and communication control rooms. Ideal for any use that calls for a multi-channel talkback unit.

Clearcom (Jands EZICOM) hard-wired talkback system:

Clearcom:

- **Clearcom / Beyer DT-108 Headset** - Although all our master stations and belt-packs are supplied complete with Beyer DT 108 single-sided headsets, the headsets are available if required as a separate item. Beyer Model DT-109 dual-sided headsets are also available
- **Clearcom CCM-MS-232 Two Channel Master Station** - This unit offers two separate channels of intercom that can be linked to make one large talkback system. The MS-232 master station will support up to sixty belt-packs
- **Clearcom CCM-MS-440 Four-Channel Master Station** - This is a four-channel talkback master station. Each of the four channels has separate talk, listen and call buttons, plus program level and side-tone
- **Clearcom FL-1 Call Signal Flasher** - The model FL-1 connects to any Clearcom or compatible intercom system, providing both visual and audible indication of a call signal on the intercom channel. Bright large amber strobe attracts attention of the operator. Front-panel mode switch selects flasher, ring or both

- **Clearcom HS-6 Phone-Style Handset** - The HS-6 telephone-style handset offers a convenient means for the less frequent intercom user to link with the system. It is also useful when comfort or appearance requires a more conventional look. Full-duplex communication is possible and the push-to-talk button minimises bleed of external sound into the intercom line when the handset is not in use. The handset connects with the intercom station or belt-pack via a four-pin female XL connector on a 1.8m (6-ft) coiled cord
- **Clearcom IF4-B Two-Wire And Four-Wire Interface** - This two channel two-wire and four-wire interface connects the Clearcom partly-line system with a wide range of external communications devices. It will connect Clearcom systems to TV cameras, two-way radio units and other communication devices through their headset jacks or four-wire circuits. Features individual transmit, receive, and null controls, as well as transmit-level indicators
- **Clearcom MS 812A 12-Channel Programmable Master** - The MS812A provides twelve channels of standard Clearcom partly-line intercom
- **Clearcom RS-501 Belt-Pack** - The Model RS-501 is a miniature single-channel belt-pack fitted with a recessed volume control, a microphone on/off switch, a signal button and an indicator, side-tone adjustment, a four-pin headset connector and a belt clip
- **Clearcom RS502 DUAL Channel Belt Pack** – This is a dual-channel belt-pack fitted with a recessed volume control, microphone on/off switches for both channels, signal button and indicator, side-tone adjustment, a four-pin headset connector and a belt clip. Supplied complete with Beyer DT 108 headsets
- **Clearcom TW-20 Two-Way Radio Interface** - Allows two-way radio users communicate with elements of a Clearcom hard-wired or wireless system

JANDS EZICOM:

- **JANDS EZICOM** (Clearcom compatible) E-400 Master Station - The E-400 is a 1RU four-channel master station with regulated power supplies capable of supporting up to twenty belt-packs
- **JANDS EZICOM** (Clearcom compatible) E200 Master Station - this is a 1RU two-channel master station with regulated power supplies capable of supporting up to twenty belt-packs. A basic two-channel intercom with call button and microphone switch. There is no loudspeaker or call buzzer. It is not possible to join the two intercom lines together to create a "party line". Supplied with Beyer DT108 (single ear) headsets
- **JANDS EZICOM E-100 Belt Pack** - The Model E-100 is a single-channel belt-pack. On the front is a mic on/off switch and call LED, a volume control and a call switch. The headset is connected on a four-pin XL connector. Three-pin XL connectors provide intercom signal and loop-through. The E-100 belt-packs are fully compatible with Clearcom. Supplied complete with Beyer DT108 (single ear) headsets

MT&A:

- **MT&A – Clearcom "VOLTS-OFF" Box** - An MT&A custom built box that removes the 30-Volts from the intercom line. Provided three-pin XL loop-through connectors for the intercom line with an additional (volts off) 600-Ohm balanced audio output on an XL connector. This enables the intercom line to be connected to a normal amplifier or loudspeaker, or an IFB/IEM transmitter.

Clearcom Micro-Matrix Plus Digital Intercom:

- **CCM-CCI-22** – two-wire standard (Clearcom) - Dual duplex party line interface module
- **CCM-FOR-22** – four-wire audio, two-way (Motorola) radio - Dual IFB interface module
- **CCM-ICS-2003** – twelve-key display intercom/control station - with keypad and EL display, 2RU
- **CCM-ICS-92** - nine key LED display intercom station - with CCM-GM-18 - 460mm (18") gooseneck microphone and Beyer DT108 headsets
- **CCM-TEL-14** – two-line auto nulling - Dual digital telephone interface module
- **Clearcom Micro Matrix Talkback System** (Note: POA to suit your individual requirements) - The Micro Matrix assignable talkback system is a complete talkback system that can either stand-alone or be readily interfaced with existing talkback systems. The Micro Matrix has twenty-four full-duplex communication ports
- **Clearcom / Beyer Model DT-108 Headsets** - Although all your talkback stations are supplied complete with Beyer DT 108 single-sided headsets, they are available if required as a separate item. Beyer Model DT-109 dual-sided headsets are also available
- **Clearcom CCM-MMX-24** – twenty-four-port digital
- **Clearcom Plug-In Gooseneck Panel Microphone** - The GM-9 and GM-18 gooseneck microphones are designed for use with Clearcom master stations. They feature a gold-plated, threaded, locking three-conductor quarter-inch RTS connector for secure connection to the master station. The microphones are available in 22.5cm (9") or 45cm (18") lengths, mounted on a durable, flexible gooseneck.

"Pots" Audio Codecs:

- **Comrex "Hotline" codec** - A normal phone line can instantly become a four-wire (two-way) 10kHz-bandwidth program line! Ideal for program transmission and link backup at remote locations for radio and television broadcasts, for wide-band talkback, and for corporate teleconferencing (a lot better quality than a telephone hybrid but uses the same type of line)
- **Tieline Patriot** - Tieline, who developed the World's best Plain Old Telephone Service (POTS) Codec technology has now developed the new PATRIOT "POTS only" codec which delivers high quality bi-directional audio for usage over a standard telephone line. A superb DSP algorithm delivers crystal clear 15kHz mono audio in real time at bit rates as low as 24kbps and a small 100s delay and a minimal loss of quality over standard telephone line.



HIGH POWERED FM RADIO TRANSMITTERS:

1 watt / 20 watt / 200 watt Bay City portable FM Transmitter systems. Temporary licence required.

- **Portable (1 Watt) FM Stereo Radio Transmitter** - This is a fully portable one-Watt FM broadcast-quality radio transmitter of the type normally used for "tourist and community radio". It is VCO locked and has balanced line-level XL inputs.
- **Portable (1W – 20W) FM Stereo Radio Transmitter** - Bay - City Broadcast Engineering Bay 20 FM TX. This is a fully portable 19-inch 2RU rack-mounted FM broadcast quality radio transmitter of the type normally used for "tourist and community radio". The transmitter output is fully adjustable from 1W to 20W.
- **Portable (200 WATT) FM Stereo Radio Transmitter** - Bay-City Broadcast Engineering Bay 200 FM TX. This is a fully-portable transmission unit consisting of a 19-inch 2RU rack-mounted 20W FM broadcast-quality radio transmitter in conjunction with a 19-inch 3RU rack-mounted 100W power amplifier unit and a 3dB-gain omnidirectional transmission antenna. The combined unit will deliver up to 200W of RF power. The transmitter is factory-adjustable for a range of frequencies in the FM radio band, and currently operates at 95.3 MHz.



MICROPHONE TO LINE AMPLIFIERS & SPLITTERS:

Line Amplifiers:

- **Audio Sigma RMA-2G two channel mic to line amp** - The new compact RMA2 is a self-contained battery-powered dual-channel mic to line amplifier. It boasts low noise operation and high headroom
- **Rane DMS 22 Dual Channel Microphone Preamplifier** - The DMS 22 is a studio-grade dual-channel microphone pre-amp with switchable P48 phantom power, patented "Accelerated-Slope™" EQ sections with parametric mid-range, direct and stereo mixer outputs with level and pan controls. Additional features include a switchable 15/50/100 Hz low-cut filter, XL mic inputs, and balanced 6.5mm TRS and XL outputs
- **Shure FP-11** - The FP-11 is a mic-to-line amplifier providing up to 84db of additional gain in fifteen steps of 6db for boosting microphone and auxiliary level devices to line level. It features XL connectors for both input and output and is powered by a standard 9-volt battery.

Splitters:

- **Audio Sigma MLA-8 Eight-Channel Mic To Line Amp** - The MLA-8 is a state of the art, low noise, high headroom, mains powered eight-channel mic to line unit
- **Audio Sigma RMA-2G Two Channel Mic To Line Amp** - The new compact RMA2 is a self-contained battery-powered dual-channel mic to line amplifier. It boasts low noise operation and high headroom
- **XTA DS800 Mic/Line Distribution System** - The XTA DS800 is a high quality active distribution / splitter unit containing eight channels of processing in 2U of rack space. Each channel features one actively balanced input and a total of four outputs, two of which are individually actively balanced and normally connected to Front of House and Stage Monitor consoles. The two remaining outputs are transformer isolated and located on the front panel of the unit (broadcast/record feeds). 50dB gain via five position gain switch. Phantom power (48VDC) switchable to each input on front panel.



AUDIO PROCESSORS, FX UNITS & SYSTEM MONITORS:

Compressors, limiters, gates, de-essers, finalizers and vitalizers from DBX, Aphex, Drawmer, Hof, Yamaha, Calrec, SPL, Furman Sound, LA Audio and XTA.

Equalizers:

- **dbx® 1215 Dual Channel 15-Band Graphic EQ** - Dual channels, 15 2/3-octave bands, 10Hz to 50kHz frequency response, ISO frequency centers, +/-12dB input gain range, and switchable 40Hz/18 dB per octave low-cut filters. Other features include 45mm faders; selectable ± 6 or ± 15 dB boost/cut range; XLR, barrier strip, and 1/4" TRS connectors; balanced inputs and outputs; and chassis/signal ground lift capabilities for quick hum isolation
- **dbx® 231 Dual Channel 31-Band Graphic EQ** - This includes two 31-band channels of 1/3-octave equalization with ± 6 or ± 12 dB boost/cut range; XLR, 20mm faders and 1/4" inputs; nonconductive nylon sliders; and an intuitive user interface with comprehensive output and gain reduction metering. 10Hz to 50kHz frequency response, 108dB dynamic range and internal toroidal transformer. Exceptional sound, performance and reliability.

Limiters / Compressors / Gates:

- **Aphex 720 Dominator II** - This is a precision multi-band peak limiter that is perfect in situations where certain frequencies need to be selectively limited while not effecting other parts of the audio spectrum. The Dominator has become the world-standard for peak limiting because of its transparency and effectiveness. Once the peak ceiling is set on this unit, there is no higher amplitude in the output.
- **Calrec RQD 6400 Twin Stereo Compressor** - This super-smooth twin stereo compressor / limiter is the ultimate in its class. The RDQ-6400 has two separate balanced stereo line input/output channels, each with a separately controllable compressor and a simultaneous limiter.

- **dbx Model 1066 Stereo Compressor / Limiter / Gate** - Whether you're looking for "heavy" compression or more subtle gain-control, the dbx 1066 stereo compressor/limiter/gate with selectable hard-knee or OverEasy™ dynamics is ideal.
- **dbx Model 160A Compressor / Limiter** - The dbx 160A is the latest generation of the legendary dbx 160 family of compressor / limiters. The same classic sound, easy set-up and easy-to-read metering are now married to an improved signal path and stronger chassis design. The result is the new industry-standard compressor / limiter which is digital-ready and road tough.
- **dbx Model 2231 Equaliser-Limiter** - The dbx 2231 is a dual thirty-one band graphic equaliser with in-built limiters and noise reduction. Features include switchable 6dB or 12dB boost and cut, variable high-pass and low-pass filters, hard-wire bypass and balanced barrier-strip, XL and TRS inputs and outputs, all mounted in a compact 3RU package.
- **Drawmer Gate** - The Drawmer DS201 is a dual-channel gate that may be used as two independent channels or linked for true stereo operation. In addition to its function as a gate, the DS201 also has a ducking mode and has many creative applications in addition to its ability to gate out unwanted noise and cross-talk.

Multi-Effect Processors:

- **SPL Model 9629 Auto Dynamic De-Esser** - The SPL 9629 Auto-Dynamic de-esser is a very clever device that automatically finds the offending male or female sibilant frequency, and notches it out. It is as simple as selecting "male" or "female", and this unit does the rest
- **TC Electronic Finalizer** - This easy-to-use processor allows you to creatively control the dynamics of your final mix. The use of a three-band compressor, limiter and expander makes the dynamics section of the Finalizer extremely flexible, while maintaining the fidelity of the original material. In combination with a "normalizer" and an in-built five-band equaliser, the Finalizer gives you a very powerful tool to complete the all-important final mix
- **The Classic Vitalizer** - Through an ingenious combination of dynamic equalisation, amplitude controlled phase correction and harmonic filtering, the SPL Classic Vitalizer realises the full potential of the entire audio spectrum. It features a DEEP button allowing unprecedented control over the bass frequencies by broadening the processing range of the SUB BASS control
- **The Stereo Vitalizer** - Through an ingenious combination of dynamic equalisation, amplitude controlled phase correction and harmonic filtering, the SPL Stereo Vitalizer realises the full potential of the entire audio spectrum. The controls have been streamlined to give easy access to the unit's maximum tonal flexibility. This frees you to get on with the task at hand - to be creative with sound
- **Yamaha SPX990 Multi-Effect Processor** - The SPX990 offers eighty pre-set effect programs including accurate simulations of natural reverberation with variable early reflection, delay and echo effects, modulation effects, pitch change, sampling programs that can loop playback, and much more. You can even create and record custom effects for later use.

Pre Amplifiers:

- **The dbx 386 Dual Vacuum Tube Preamp** - with digital output capabilities offers the classic smooth and warm qualities of tube microphone pre-amplification, combined with the dbx Type IV™ conversion system for analogue and digital recording.



MICROPHONE SUPPORT SYSTEMS:

J.L.Fisher 2/3 Studio Booms. The ONLY Fisher Booms available in Australia. Rental in Sydney and Melbourne. Experienced audio boom operators also available / K&M microphone stands/arms, Manfrotto Super Clamps, MT&A custom limpet mounts / Aluminium and carbon fibre 'Fishpole' booms from Panamic, Lightwave and Boomshadow.

Studio Booms:

- **Studio Booms J.L. Fisher Model 2/3** - Three complete "2/3" booms are available. The "2/3" is eminently suitable for use either in the studio or on location for film and TV production. Available in Melbourne, Brisbane and Sydney! **Experienced studio boom operators available if required. "Rare spares" for Mole-Richardson booms available. Boom technicians available to service booms of either make.*
- **Boomshadow VDB604** - Rigid, light and strong, they benefit from the recent technologies in carbon fibre winding and the experience of fourteen successful years of supplying the most demanding operators.
- **Lightwave** - Telescopic fish-pole booms long and short.
- **Panamic Carbon Fibre Boom** - Long telescopic carbon fibre fish-pole boom – extra light!

Microphone Support Systems:

- **Konig & Meyer (K&M)** - Industry-standard Konig & Meyer folding telescopic microphone stands with boom arms: the best available!
- **Manfrotto Super-Clamps** - These handy devices are perfectly suited to a number of mounting applications where the surface is either soft or slippery. It consists of two rubber-faced jaws shaped to grip circular or square objects like lighting grids or ground-support drape kits.
- **MT&A Custom Limpet Mounts** - This is one of Murray's clever adaptations using a standard Limpet suction-mount as normally used by Grips to mount camera rigs on cars. MT&A has modified these with a T-piece attachment that provides two standard 3/8-inch microphone stand threads. They are great for mounting radio-microphone antennas or effects microphones. The Limpet mount will stick ONLY to perfectly flat surfaces like glass or sheet metal. What new use can you find for this ingenious device?

Booms Handheld / Fish-Pole Booms:

- **Boomshadow VDB604** - Rigid, light and strong, they benefit from the recent technologies in carbon fibre winding and the experience of fourteen successful years of supplying the most demanding operators
- **Lightwave** - Telescopic fish-pole booms long and short
- **Panamic** - Long telescopic aluminium fish-pole boom
- **Panamic Carbon Fibre** - Long telescopic carbon fibre fish-pole boom – extra light!



HEADSETS/ PHONES & ACCESSORIES:

- **Sennheiser HMD 25-1** - Headphones The HMD 25-1 headset features dynamic, closed headphones giving excellent attenuation of background noise, and an MD 414 super-cardioid close-contact dynamic microphone.
- **Sennheiser HD25** - The closed-back HD25s are purpose-designed, professional monitoring headphones offering high attenuation of background noise. Ideal monitoring headphones for sound and cameramen
- **Sennheiser HD25SP** - Headphones HD25SPs are purpose-designed professional monitoring headphones offering high attenuation of background noise. Capable of handling very high sound pressure levels. 3.5mm TRS connector.
- **Clearcom / Beyer DT-108 Headset** - The Beyer DT108 single earpiece headset is one of the most popular headsets currently available. Adopted as a standard in the Broadcast and TV industry through its ability to stand up to the rigours of the profession.
- **Clearcom / Beyer DT-109 Headset** - BEYER DT109 Headphones ****Grey**** Two earpiece version of DT108. Extremely popular especially in the Broadcast industry. The dynamic mic is fitted with a noise-cancelling capsule optimised for maximum intelligibility.
- **Telex HR-1 - Single-Sided Headset** - The HR-1 is a single-sided, medium-weight passive noise reduction headset with dynamic noise-canceling microphones. The headset has a noise reduction rating of 21dB; suitable for use in a moderately noisy environment.
- **Telex HR-2 - Double-Sided Headset** - The HR-2 is a dual-sided, medium-weight passive noise reduction headset with a dynamic noise-canceling microphone. The headset has a noise reduction rating of 21dB; suitable for use in a moderately noisy environment.
- **Telex PH-88 - Single-Sided Headset** - Single-sided Lightweight Headset, A4F Connector. Super light-weight single muff headset with dynamic noise canceling microphone. Semi-rigid, fully adjustable gooseneck mic boom for precise positioning.
- **HME HS12 Headset** - For use only with the HME Comms range of equipment, This super lightweight, single-muff headset with omnidirectional electret microphone can be worn on the left or right ear. Flexible micro-phone boom ensures optimal sound clarity.
- **HME HS14 Headset** - For use only with the HME Comms range of equipment and with a noise-cancelling electret microphone, this "overtheear" single-muff headset blocks out background noise and keeps conversations clear and audible.
- **HME HS14D Headset** - For use only with the HME Comms range of equipment, your conversations will be loud and clear even in noisy environments with this "over-the-ear" dualmuff headset with noise-cancelling electret microphone.
- **HME HS15 Headset** - For use only with the HME Comms range of equipment, this headset has been developed for use with the HME BP200 Belt Pack.
- **MB Quart model K 900 Headset to suit Mooretronics Sports Commentator Units** - The MBK 900 SC has been specifically designed and developed as an ON-AIR headset for live performances and sporting events where high audio quality, reliability, and comfort are of prime importance.

Headphone And Bridging Amplifiers:

- **Shure FP-12** – A headphone bridging-amplifier with one input and two outputs, and is ideal for boom operators. It can provide headphone feeds by bridging any input signal without loading it
- **Shure FP-22** - This is a battery-powered stereo headphone amplifier that provides headphone feeds from any audio input source. It has the unique capability of monitoring either mono or stereo inputs or any combination of both. The FP-22 monitors and combines these signals in the headphones without affecting the original signal. It is ideal for anyone in the broadcasting, sound reinforcement or audio recording fields who needs a flexible, high-quality headphone monitor.

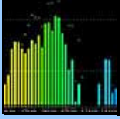


VIDEO DISTRIBUTION EQUIPMENT:

Sony and Panasonic 14" and 21" High Resolution video monitors. Samsung 17" TFT flat screens / audio visual baluns, Kramer VM-20ARII distribution amplifier and video isolator OC-2 dual channel.

Video Equipment:

- **Intelix AVO-V1A2 Composite Video and Stereo Audio Balun** - These devices enable you to send audio and video signals on UTP (Unshielded Twisted Pair) "Cat five" cables. With the growing demand for multimedia information, audio and video equipment is becoming an integral part of the corporate wiring landscape.
- **Kramer VM-20ARII Distribution Amplifier** - The VM-20ARII has four looping video and audio (stereo) inputs, can function as a 1:20, 2x1:10, 4x1:5 or 1:10+2x1:5 DA and audio operation mode may be separated from video mode.
- **Kramer OC-2 Dual Channel Optical Video Isolator** - The Kramer OC-2 is a high quality, dual channel optical video isolator. It is designed to provide complete isolation between video sources and receiving devices such as monitors, projectors and VCR's.



METERING / MONITORING EQUIPMENT:

- **Furman MS2A-1 Two Channel, Analogue Audio Confidence Monitor System Features** - All Models: High output magnetically shielded speakers / Wide-range, high visibility, 14 segment meters with dimmer and VU/PPM switch / Selectable +4dBu or +8dBu meter reference / High power headphone amplifier.
- **Furman MS2ADV-1 Two Channel, Analogue / Digital, Audio, Video Confidence Monitor System** - The Furman MS Series Confidence Monitors provide assurance that analogue audio, digital audio, or video signals are present and meet established quality standards before being broadcast, recorded, or otherwise distributed.
- **Furman MS4AD-1 Confidence Monitor System** - Four Channel, Analogue / Digital Audio



FINGERWORKS TELESTRATOR:

The Fingerworks Telestrator is designed to overlay computer generated graphics and a wide variety of effects directly into live and recorded television broadcasts. For a demonstration of the Telestrator, please visit the website: www.telestrator.com or contact autocue@murraytregonning.com.au for further details.

FingerWorks Telestrators dominate the sports broadcast market in North America and Australia. Our client list includes major TV networks in the U.S., Canada, Australia, England and Scotland. Features are continually upgraded as new ideas and improved technology become available.

Why Fingerworks?

- The system was designed by television people. We know your technical requirements and we speak your language.
- FingerWorks telestrates in real time.
- The system is easy to set up and easy for your analysts to learn and use.
- The touchscreen provides instant access to all the tools your analyst will need to make their on air points quickly and with authority.
- We provide support and service second to none.
- Expanding Applications

The original FingerWorks was designed as a field version for live sports broadcasts.

At our clients' request, we have added a studio version now in use for news, traffic, weather, world events and of course, sports. Both models are available in SD-SDI, HD or dual HD/SD switchable.

We have a selection of remote touch screens to choose from. Lorentco 15", 17" and 21" screens and the 'Next Window' 42"/116cm screens, perfect for presenters on-screen. All of these remote screens can be connected to the FWT Field and Studio versions via Fibre or Cat5 KVM Extenders.

The FingerWorks Field Version is a one-piece unit made up of a 15 inch LCD/Touchscreen attached to a "lunchbox" style PC. The Field Unit is designed for use in the announce booth or at a remote location.

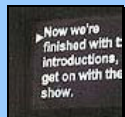
The one-piece configuration makes the Field Unit ideal for Sports broadcasts and easy shipping from location to location. Video lines need to be run from the TV mobile or control room to the FingerWorks Unit.

The Field Version can be configured for dual LCD/Touchscreen operation. Both can function alternately but not simultaneously. It is available in Analogue and SDI. There are restrictions on the distance SDI signals will travel over standard video cables.

The FingerWorks Studio Version is designed for studio use or permanent installation in a TV Mobile. It consists of a rack mount PC and an outboard 15 inch LCD/Touchscreen. The LCD is a rack mount unit which can be built into a desk or a wedge-type enclosure. It is also available with a heavy duty stand.

The LCD/Touchscreen can be connected to the PC using analogue cables for VGA and COM and is limited to a length of approximately 40 feet. The LCD/Touchscreen can also be connected to the PC using a KVM (keyboard, video and mouse) extender and CAT5 cable. The KVM extender will also need COM capability for the touchscreen. In this configuration the LCD/Touchscreen can be up to 1,000 feet away from the PC.

The Studio Version also allows two LCD/Touchscreens to be connected to one system. Both will function alternately but not simultaneously.



PROMPTING SERVICES:

MT&A Prompting specialise in keeping your business at the cutting edge of the presentation industry. Providing the latest flatscreen technology combined with professional personnel and exceptional service for:

Please visit www.murrayregonning.com.au/prompting to view our Prompting services and download our downloadable brochure from there.

Address:

Melbourne: 40-42 Lynch Street Hawthorn 3122
Sydney: 112 Abercrombie Chippendale 2008
Brisbane: 1/8 Paxton St, Spingwood 4127

Phone:

03 9819 6455
02 9310 2799
07 3299 2288

Fax:

03 9819 2265
02 9310 2990
07 3299 3990

E-Mail:

vicbranch@murrayregonning.com.au
nswbranch@murrayregonning.com.au
qldbranch@murrayregonning.com.au

www.murrayregonning.com.au

If you can't find what you are looking for, please contact us as I am sure we will be able to help you!!